



The Newsletter

JAPANESE COMMUNITY ASSOCIATION OF HAWAII

ハワイ島日系人協会



April 2019

714 KANOELEHUA AVE. #202, HILO, HI 96720 | TEL: 969-6437
E-MAIL: JCAHAWAII@YAHOO.COM | HTTP://WWW.JCAHAWAII.ORG

President's Message — Mike Miyahira

会長挨拶

Akemashite omedetou gozaimasu! Happy New Year to all of you.

Stepping into Ivan Nakano's shoes as president of our association is a daunting task. I hope that I will be able to do half the job that Ivan did.

Looking forward to the next two years I am hopeful that we can continue to provide all of our members with the activities and events that they have come to expect.

Coming soon is our Nikkei Kigyo dinner that celebrates the success of multi-generational businesses, to be held on Friday, May 10, 2019 at the Nani Mau Gardens. We hope that you can attend and help us honor two of our local family owned businesses that evening. Thanks to Roland

and Jan Higashi for helping the association put this event on each year.

Our friends from Shibukawa, Japan return in late April to attend the annual Merrie Monarch Festival.

We look forward to renewing acquaintances and helping to further the Sister City relationship that Hawaii County enjoys with Shibukawa City.

New Scholarship Committee Chair Dean Fuke is working diligently to get our scholarship applications out and recipients selected. If you know of any deserving student who is pursuing secondary education in Japan Studies, please let us know.



Hilo Washi Chigiri-e Classes Ends after More Than 11 Years

和紙ちぎり絵

Since 2005, Lily Nakao Sensei from Oahu has participated in Bunka No Hi and Kodomo No Matsuri sharing and teaching the art of Washi Chigiri-e. Since December 2007 bi-monthly classes have been taught by Sensei in Hilo and she has taught hundreds of students. At the January 12, 2019 class, President Mike presented Sensei with a lei and cake celebrating her 91st birthday!

Her Hilo students have displayed their art at Ueno Park in Japan at the annual Hakubi Chigiri-e Exhibition featuring over 700 pieces of art from their Japan students; also in Honolulu on several occasions, and in Hilo, including Mayor Kenoi's

office.

JCAH is very thankful to Mrs. Nakao for working with the Cultural Committee in 2002 to present the Hakubi Kimono Show with a repeat performance a few years later. She has also assisted JCAH in presenting other classes such as nuno zouri and corsages out of recycled newspaper.

May 18 will be the last Washi Chigiri-e Class in Hilo.

JCAH is very grateful to Lily Nakao Sensei and the Hakubi Kimono and Chigiri-e School of Japan for sharing this art form in Hilo and underwriting her airfare for many years.



Chigiri-e, to Last Page

In this issue:

President's Message / Hilo Washi Chigiri-e Class Ends	1
45th Shinnen Enkai & Installation Banquet and Kenjinkai Friendship Golf Tournament reports	2
Nikkei Kigyo Recognition Banquet 2019	3
Scholarship / New Members	4

Event Calendar

- Friday, May 10, 2019 — Nikkei Kigyo Recognition Banquet
- Saturday, November 16 — Bunka No Hi, Culture Day at Sangha Hall



Save the Date!

45th Shinnen Enkai & Installation Banquet

Was held on
Saturday, January 19, 2019
At Hilo Hawaiian Hotel
Moku'ola Ballroom



Guest speaker, Colbert Matsumoto talked about his experience in resurrecting Japanese Cultural Center of Hawaii from financial crisis.



Immediate past president Ivan Nakano passed the plaque to the new president Mike Miyahira.



Stunning performance by Puna Taiko



Honorable Mayor Harry Kim made a speech and thanked JCAH for enriching cultural experiences of Hawaii Island.



Consul General of Japan in Honolulu, Koichi Misawa and his wife Misako made every effort to visit us. Ivan Nakano, Mike Miyahira and Steve Ueda, President of Japanese Chamber of Commerce and Industry of Hawaii were with them.



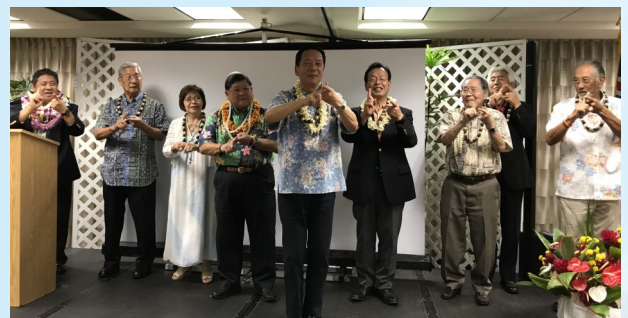
New tradition of JCAH? Past presidents passed around a large cup of sake, or Mawashinomi.

2019-2020 Officers and Directors

President: Mike Miyahira
1st Vice President: Dwayne Mukai
2nd Vice President: Lincoln Ashida
Secretary: Jane Miyasaki
Treasurer: Susie Dill
Japanese Secretary: Naomi Menor
Auditor: Lilian Watanabe
Immediate Past President: Ivan Nakano

Directors: Sadao Aoki, Amy Aoyagi, James Arakaki, Jon Arizumi, Janet Fujioka, Tommy Goya, Reiko Hamano, Jan Higashi, Roland Higashi, Arnold Hiura, Naohiro Hotta, Yuko Kakazu, Kenji Kawai, Delbert Nishimoto, Junichi Noumaru, Alan Okinaka, Allan Onishi, Paul Sakamoto, Aya Shehata, Hiroshi Suga, Art Taniguchi, Lillie Tsuchiya, Jere Usui

Honorary Directors: Dorothy Horita, David Ikawa, Larry Isemoto and Hiroshi Shima



Nobuaki Ito, Managing Director of Shibukawa Ikaho Tourism Association, led Tejime in Ikaho style.

17th Annual Kenjinkai Friendship Golf Tournament

The golf tournament was held at Hilo Municipal Golf Course on September 18, 2018. The tournament results and individual scores will be posted on JCAH website at <https://www.jcawhawaii.org>. The date for this year's tournament is September 17, 2019.



The Nikkei Kigyo Recognition Banquet began five years ago to recognize longstanding Nikkei companies in East Hawaii. We recognize that our Issei forefathers had the will, spirit creativity, diligence to do whatever it took to support their family and to provide much needed services to the community; and, their “gambare” spirit lives on in their successors.

The proceeds of this event benefits our scholarship and promotion of cultural activities. To date, JCAH has awarded 13 scholarships to deserving students whose minor or major is in Japanese studies.

6th Annual Nikkei Kigyo Recognition Banquet

HONORING: HIRANO STORE & YAMADA FURNITURE

Friday, May 10, 2019—Nani Mau Gardens

5:00 No Host Cocktails/Pupu/Performance by Puna Taiko 6:00 Program & Dinner



Naojiro and Shige Hirano opened Hirano Store in Glenwood on February 22, 1918. In addition to running the store, Naojiro also farmed, operated both a charcoal and a taxi business, served as the Glenwood Postmaster, started his own Japanese language school and served as a consular agent for his fellow Issei, who had to remain Japanese citizens since they were not allowed US citizenship. After the attack on Pearl Harbor, Naojiro was taken to an internment camp because of his role as a businessman and involvement with the Japanese community. He returned in 1945 and re-opened his Japanese language school, which remained his passion until his passing in 1962. Son Wataru and his wife Shinae took over the business. In 1969, the Volcano Highway was widened and the store was rebuilt in its current location, next door on the family's land. Wataru and Shinae ran the new store for the next 15 years with the help of their two daughters. Nephew Eric Inouye stepped in when Wataru and Shinae retired in 1984 and has been running the store ever since.



Yamada Furniture Store, Ltd. was established in August 1929 by Iwakichi Yamada. He worked on the sugar plantations, built stone walls in Ka'u, and worked at the Ikeda Shoyu Factory in addition to being a farmer, ranch hand, and hunter. He bought the former Kim Furniture store on Kilauea Avenue despite having no prior knowledge about the furniture business. After Iwakichi retired, his children took over as the business' second generation in the 1950s. The original store location was demolished and rebuilt as a two-story building, featuring the very first elevator in downtown Hilo. In addition to furniture, the larger location afforded the store more space to offer a wider variety of products. In 1978 the store moved to its current location on Kinoole Street and continues to be known for having the largest showroom in Hilo with the widest selection of home furnishings. Today, Yamada Furniture is run by members of the third and fourth generations of the family - Robin Yamada, Gene Yamada, Carol Makino, her son Gareth, and Gene's son Bryce Yamada.

JCAH MEMBER NIKKEI KIGYO BANQUET RESERVATION FORM

6th Annual Nikkei Kigyo Banquet

Friday, May 10, 2019 Nani Mau Gardens; 5 pm

Special price for JCAH members, \$75 per person. (Regular—\$90)

Name: _____ Phone: _____

E-mail: _____ Cell# _____ (text capable?) Y___ N___

____ I/we would like to attend, **\$75 per person (open seating).**

Enclosed is our check in the amount of (\$75 x _____) = \$ _____

Please make check payable/mail to: JCAH, 714 Kanoelehua Ave., Suite 202, Hilo, HI 96720

EVENT WILL SELL OUT. LIMITED SEATING. NO REFUND AFTER PAYMENT RECEIVED

Chigiri-e, from Page 1

"It is with a heavy heart that Washi Chigiri-e class will end in Hilo, said Jan Higashi, who has coordinated classes since its inception, "however, we wish Sensei the best of health and we sincerely appreciate her inspiration, talent, and dedication in spreading the art of Washi Chigiri-e."



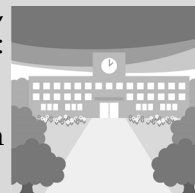
JCAH TO OFFER SCHOLARSHIP

JCAH is offering two \$1500 scholarships to high school seniors whose interest is primarily in Japanese studies and who intend to pursue a degree at a college or university in the United States or Japan. Post-secondary students formerly from the Big Island may also be considered. Preference is given to an applicant whose parent or guardian is a member in good standing of the JCAH.

Honorees last year were Caitlin Tsuchiya and Deylen Nekoba. Scholarship applications are available online: <http://jcahawaii.org> or by email: jcahawaii@yahoo.com

Application must be postmarked on or before April 12, 2019 and mailed to JCAH, 714 Kanoelehua Ave., Suite 202, Hilo, HI 96720 or by email: jcahawaii@yahoo.com.

Committee chair is Dean Fuke.



Welcome new members who joined since last newsletter

Gina & Andrew Chun
Dean & Patricia Fuke
Tilden Jio & Leo Pesi-Melzer
Bobby Jean Leithead-Todd
Michael & Sylvia Nagai

Rodney Nishiki
Tim Richards &
Terri Impson-Richards
Dennis "Fresh" Onishi
Katherine Yano



Find us on
facebook

Enter "@jcahhilo" in a
search box of Facebook.

